

My Perfect Day

Designed by Bethany Fuller of Grace's Dowry Quilts
Featuring the Playdate Collection by MY♥KT
Size: 33" x 40"



Check www.windhamfabrics.com Free Project section to see if there are any pattern updates before you start your quilt project

WINDHAM FABRICS

812 Jersey Ave ~ Jersey City, NJ 07310 ~ 201.659.0444 ~ FAX: 201.659.9719
www.windhamfabrics.com email: retail@windhamfabrics.com

My Perfect Day

Page 2



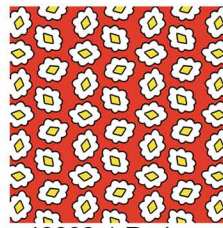
40095-X Multi



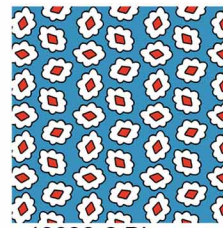
40096-2 Blue



40097-8 White



40098-1 Red



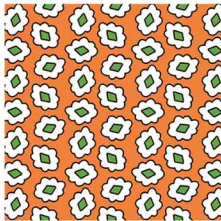
40098-2 Blue



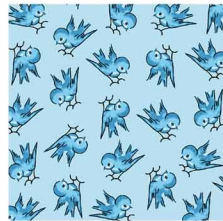
40098-3 Yellow



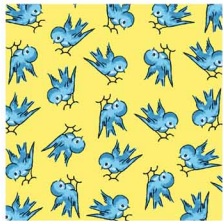
40098-5 Green



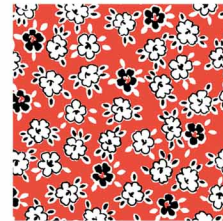
40098-6 Orange



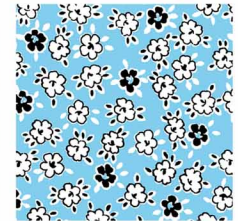
40099-2 Blue



40099-3 Yellow



40100-1 Red



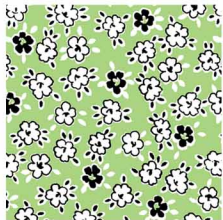
40100-2 Blue



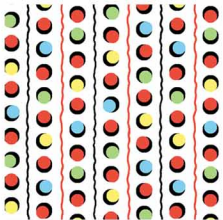
40100-3 Yellow



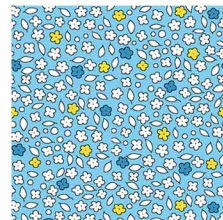
40100-4 Pink



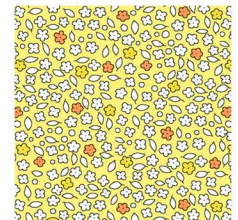
40100-5 Green



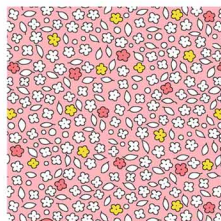
40101-1 Red



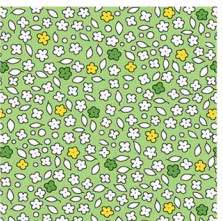
40102-2 Blue



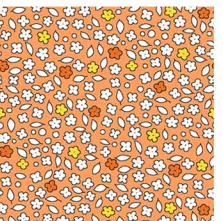
40102-3 Yellow



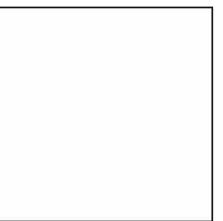
40102-4 Pink



40102-5 Green



40102-6 Orange



31835 White

Fabric Requirements

1 repeat of 40095-X

¼ yd of white solid (31835) to border panel print rectangles

5/8 yd 40101-1 for Outer Border

1/3 yd 40096-2 for Border Corners

¼ yd 40100-5 for Inner Border and Patchwork

1/3 yd 40102-1 for Binding and Patchwork

1/4 yd of 40097-8 for Accent Border

Sweet 1/16 of EACH for Patchwork:

40098-1,2,3,5,6

40099-2,3

40100-1,2,3,4

40102-2,3,4,5,6

1 ¼ yd Backing

My Perfect Day

Page 3

Cutting Instructions

From the panel print (40095-X) fussy cut 9 - 4 ½" x 5 1/2 " rectangles

From the white solid, cut 1 - 5 ½" strip

From this strip cut:

36 - 1" x 5 ½" rectangles

From the print for the corner squares (40096-2) fussy cut 4 - 4" squares, centering the circles

From the accent border print (40097-8) fussy cut 2 - 2 ½" strips, centering the numbers

From the inner border print (40100-5) cut 3 - 1 ½" strips

From the outer border print (40101-1) cut 4 - 4" strips (stripes going the short way)

From the binding fabric (40102-1) cut 4 - 2 ½" strips for binding

From the remaining prints for patchwork, cut a TOTAL of 328 - 1 ½" squares (approx. 19 from each fabric)

Piecing Instructions

Sew the 1 ½" squares into 12 units of 2 x 6 squares each and 4 units of 2 x 23 squares each for pieced sashing strips.

Sew the 1" x 5 ½" rectangles to the fussy cut rectangles, sides first, then top and bottom. Block should measure 5 ½" x 6 ½" unfinished.

My Perfect Day

Page 4

Arrange these blocks in chronological order according to the time printed at the top. Sew together with the pieced sashing strips.



Measure top and bottom of quilt center. Cut accent border strips to this length and sew to quilt.

Piece inner border strips.

Measure long sides of quilt center.

Cut two strips to this length. Sew to quilt sides.

Measure top and bottom of quilt center.

Cut two strips to this length and sew to quilt.



My Perfect Day

Page 5

Measure all 4 sides of the quilt. Cut out border strips to these lengths. Sew the side borders to quilt first. Add corner squares to top and bottom borders then sew to quilt.

Quilt and bind.



Be sure to visit www.windhamfabrics.com to see the complete collection and to download this and other Free Projects